



PROPOSED ACQUISITION OF ADRIATC METALS

June 13, 2025

DELIVERING GROWTH AND VALUE
with high-margin, long-life mines

Conference Call Participants



David Rae

President & CEO
Dundee Precious Metals



Laura Tyler

CEO and Managing Director
Adriatic Metals plc

Cautionary Statement

This presentation (including any information incorporated by reference into this presentation) contains statements which are, or may be deemed to be, “forward-looking statements” within the meaning of applicable securities laws. Forward-looking statements are prospective in nature and are not based on historical facts, but rather, on current expectations and projections of the management of Dundee Precious Metals Inc. (“DPM”) about future events, and are therefore subject to risks and uncertainties which could cause actual results to differ materially from the future results expressed or implied by the forward-looking statements.

The forward-looking statements contained in this presentation include statements with respect to DPM’s proposed acquisition (the “Transaction”) of the entire issued, and to be issued, ordinary share capital of Adriatic Metals Plc (“Adriatic”), the project economics, financial and operational parameters such as expected production, processing methods, cash costs, all-in sustaining costs, other costs, capital expenditures, cash flow, NPV, and life of mine for the Vareš Silver Operation in Bosnia and Herzegovina (“Vareš”), mineral reserves and mineral resources, the financial condition, results of operations and business of Adriatic and certain plans and objectives of DPM with respect thereto, the benefits of the Transaction to the parties and their respective shareholders and/or other stakeholders and other statements other than historical facts. Often, but not always, forward-looking statements can be identified by the fact that they do not relate only to historical or current facts and may use forward-looking words, phrases and expressions such as “anticipate”, “target”, “expect”, “believe”, “intend”, “foresee”, “predict”, “project”, “estimate”, “forecast”, “intend”, “plan”, “budget”, “scheduled”, “goal”, “believe”, “hope”, “aims”, “continue”, “likely”, “will”, “may”, “might”, “should”, “would”, “could”, “seek”, “plan”, “scheduled”, “possible”, “continue”, “potential”, “outlook”, “target” or other similar words, phrases, and expressions; provided that the absence thereof does not mean that a statement is not forward-looking. Similarly, statements that describe objectives, plans or goals are or may be forward-looking statements. These statements are based on assumptions and assessments made by management of DPM in light of their experience and their perception of historical trends, current conditions, future developments and other factors they believe appropriate. By their nature, forward-looking statements involve known and unknown risk and uncertainty and other factors which may cause actual results, performance, actions, achievements or developments to differ materially from those expressed in or implied by such forward-looking statements, because they relate to events and depend on circumstances that will occur in the future. Although DPM believes that the expectations reflected in such forward-looking statements are reasonable, no assurance can be given that such expectations will prove to have been correct and readers are therefore cautioned not to place undue reliance on these forward-looking statements which speak only as at the date of this presentation.

There are a number of factors which could cause actual results, performance, actions, achievements or developments to differ materially from those expressed or implied in forward-looking statements. Such factors include, but are not limited to: the ability to proceed with or complete the Transaction; the ability to obtain requisite regulatory and shareholder approvals and the satisfaction of other conditions to the Transaction on the proposed terms; changes in the global, political, economic, social, business and competitive environments and in market and regulatory forces; changes in future inflation, deflation, exchange and interest rates; changes in tax and national insurance rates; future business combinations, capital expenditures, acquisitions or dispositions; changes in general and economic business conditions; changes in the behaviour of other market participants; the anticipated benefits of the Transaction not being realised as a result of changes in general economic and market conditions in the countries in which DPM and Adriatic operate; changes in or enforcement of national and local government legislation, taxation, controls or regulations and/or changes in the administration of laws, policies and practices, expropriation or nationalisation of property and political or economic developments in Bosnia, Serbia, Bulgaria and Ecuador and other jurisdictions in which DPM and Adriatic carry on business or may carry on business in the future; fluctuations in the spot and forward price of gold, copper, silver and other metals or certain other commodities (such as diesel fuel, natural gas and electricity); the results of exploration activities and feasibility studies; the speculative nature of mineral exploitation and development; risks that exploration data may be incomplete and considerable additional work may be required to complete future evaluation, including but not limited to drilling, engineering and socioeconomic studies and investment; future prices of gold and other metals; possible variations of ore grade or recovery rates; accidents, labour disputes and other risks of the mining industry; discovery of archaeological ruins; risk of loss due to acts of war, terrorism, sabotage and civil disturbances operating or technical difficulties in connection with mining or development activities, including geotechnical challenges and disruptions in the maintenance or provision of required infrastructure and information technology systems; outcome of pending or future litigation proceedings; the failure to maintain effective internal control over financial reporting or effective disclosure controls and procedures, the inability to remediate one or more material weaknesses, or the discovery of additional material weaknesses, in the internal control over financial reporting; other business and operational risks and challenges; failure to comply with environmental and health and safety laws and regulations; timing of receipt of, or failure to comply with, necessary notices, concessions, permits and approvals; weak, volatile or illiquid capital and/or credit markets; changes in the degree of competition in the geographic and business areas in which DPM and Adriatic operate; any public health crises, pandemics or epidemics and repercussions thereof; changes to the boards of directors of DPM and/or Adriatic and/ or the composition of their respective workforces; safety and technology risks; exposures to terrorist activity, information technology system failures, cyber-crime, fraud and pension scheme liabilities; risks relating to environmental matters such as climate change including DPM and/or Adriatic’s ability along with applicable governmental bodies and/or other stakeholders to measure, manage and mitigate the impacts of climate change effectively; changes to law and/or the policies and practices of regulatory and governmental bodies; Russia’s invasion of Ukraine, conflicts in the Middle East, and any cost of living crisis or recession. Specific reference is made to the most recent Annual Information Form and other disclosure documents filed by DPM at www.sedarplus.ca for additional information on some of the factors and risks that may affect DPM’s ability to achieve the expectations set forth in the forward-looking statements contained in this presentation. Other unknown or unpredictable factors could cause actual results, performance, actions, achievements or developments to differ materially from those expected, estimated or projected in the forward-looking statements. If any one or more of these risks or uncertainties materialises or if any one or more of the assumptions proves incorrect, actual results, performance, actions, achievements or developments may differ materially from those expected, estimated or projected. Such forward-looking statements should therefore be construed in the light of such factors.

Neither DPM nor any of its associates, directors, officers or advisers, provides any representation, assurance or guarantee that the occurrence of the events expressed or implied in any forward-looking statements in this presentation will actually occur.

DPM does not assume any obligation to update or correct the information contained in this presentation (whether as a result of new information, future events or otherwise), except as required by applicable law. All subsequent forward-looking statements attributable to DPM or any person acting on their behalf are qualified by the cautionary statements herein.

Transaction Highlights



Creates Premier Mining Business

- High-margin portfolio
- Peer-leading growth profile
- High-quality growth pipeline



Near-Term Production Growth

- Complements organic growth initiatives



Regional Expertise

- 20+ years exploring, building and operating in the region
- Assets of similar scale
- Strong community partnerships



Financial Strength & Diversified Cash Flow

- Strong balance sheet
- Cash flow growth & diversification



Increased Mineral Reserve Life

- Vareš: initial 15-year operating life
- Prospective 4,400 ha land package
- Proven exploration success



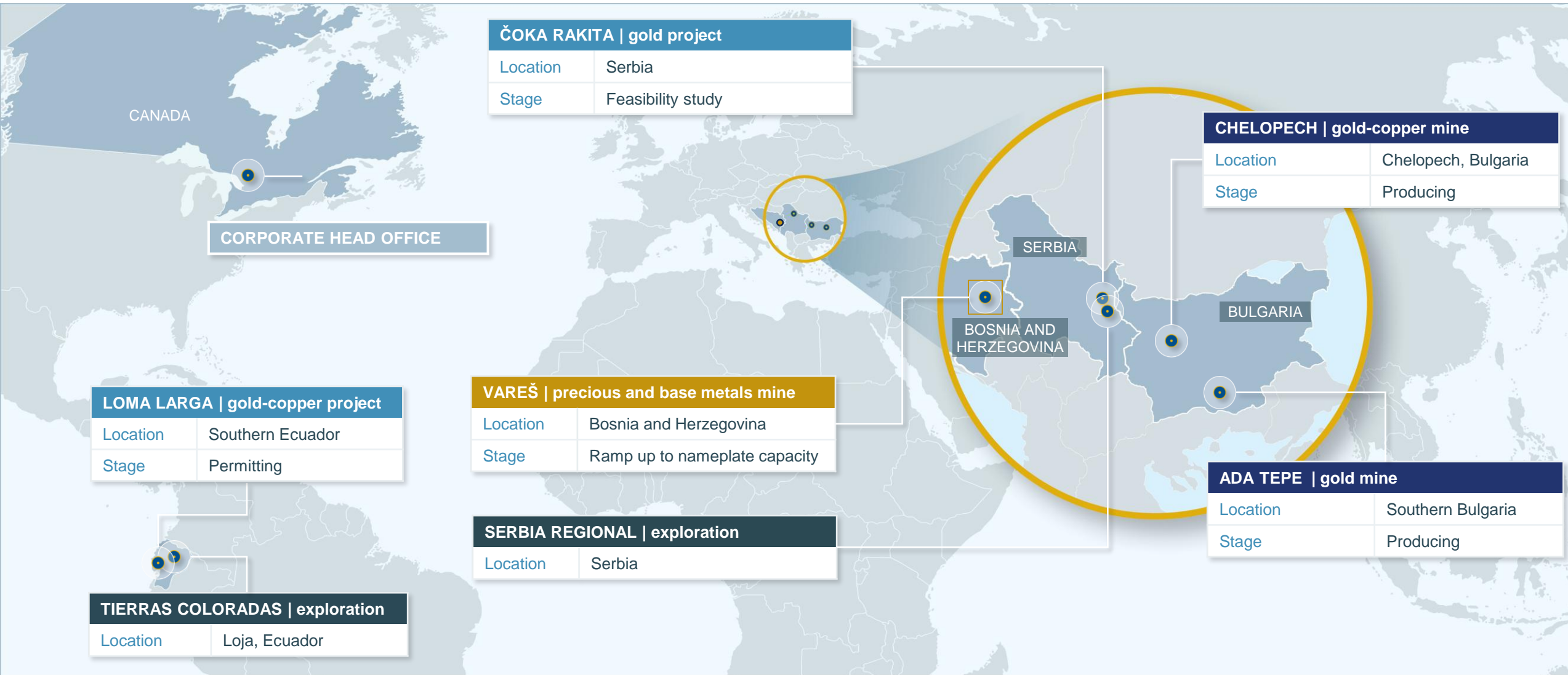
Capital Markets Profile

- Increases financial scale & liquidity
- Market relevance & investor appeal

Transaction Summary

Structure	<ul style="list-style-type: none"> DPM to acquire the entire ordinary share capital of Adriatic by way of a court-sanctioned scheme of arrangement under Part 26 of the UK Companies Act 2006 (the “Scheme”) Implied transaction equity value of approximately \$1.25 billion based on Adriatic’s ordinary shares outstanding Current DPM shareholders and former Adriatic shareholders to own approximately 75% and 25% on a fully diluted basis of the outstanding common shares of the pro forma company, respectively
Consideration	<ul style="list-style-type: none"> Adriatic shareholders are entitled to receive 0.1590 of a DPM share and £0.93 (A\$1.93) in cash for each Adriatic share held, which implies consideration of £2.68 (A\$5.56) per Adriatic share based on the closing price of DPM on June 11, 2025 and an exchange rate of £1.00:CAD\$1.85 and £1.00:AUD\$2.08 on June 11, 2025 51% premium based on Adriatic’s closing price of £1.78 on May 19, 2025 and a 32% premium based on Adriatic’s 30-day volume weighted average price (“VWAP”) of £1.93 and the 30-day VWAP of DPM on the TSX as at the same date Adriatic shareholders will be able to elect, pursuant to a “mix and match facility”, subject to off-setting elections, to vary the proportions in which they receive cash and DPM shares under the Scheme. The total number of DPM shares to be issued and the total amount of cash to be paid under the Scheme will not be varied as result of such elections
Approvals & Conditions	<ul style="list-style-type: none"> Unanimous recommendation by the Boards of Directors of DPM and Adriatic Approval of Scheme by Adriatic shareholders requiring a majority in number of those present and voting representing at least 75% of the voting rights of all shares voted Approval of DPM shares to be issued under the Transaction by a simple majority of DPM shareholders Directors and senior officers of DPM and Adriatic have entered into voting support agreements and irrevocable undertakings respectively, pursuant to which they will vote their common shares held in favour of the Transaction Requires regulatory approvals and the satisfaction of certain other closing conditions customary for a transaction of this nature
Other	<ul style="list-style-type: none"> Certain Adriatic shareholders, including Adriatic Directors, have agreed to provide irrevocable undertakings to vote in favour of the Scheme, representing 0.4% of Adriatic’s total outstanding ordinary share capital Upon closing, DPM’s existing board of director composition will be maintained Executed irrevocable undertakings in favour of the Scheme by Helikon and L1 Capital
Timing	<ul style="list-style-type: none"> Shareholder meetings expected to be held in Q3 2025 Transaction is expected to close in Q4 2025

High-Margin Production Base with Attractive Organic Projects



Vareš: High-Grade Precious and Base Metals Underground Mine

HIGH-QUALITY ASSET

- Long operating life
- Attractive high-grade orebody
- Production scale and margin
- Supportive mining jurisdiction

LOGICAL FIT WITH DPM STRENGTHS

- Decades of experience operating in region
- Expertise in underground mining
- Track record of building, expanding and optimizing mines
- Global presence in metals concentrate sales network
- Proven exploration success

Location	Bosnia and Herzegovina
Claims	4,400 hectares
Processing capacity	850,000 tonnes per annum
Operating life	15 years
Products	Silver-zinc and lead-silver-gold concentrates
Production	168koz. gold equivalent (annual average) ¹
All-in sustaining cost	\$893/oz. gold equivalent ²
Ownership	100%

Vareš: NI 43-101 Technical Report Summary

Optimized, lower risk profile for Vareš

- Reflects DPM's optimized approach to Vareš:
 - Revised bottom-up mine design sequence
 - Grade control and geotechnical drilling program
 - Accelerated access to higher-value tonnage
 - Paste backfilling of mining areas
- Ramp-up to 850ktpa expected by year-end 2026

Key Operating and Financial Metrics

(based on mineral reserves only)

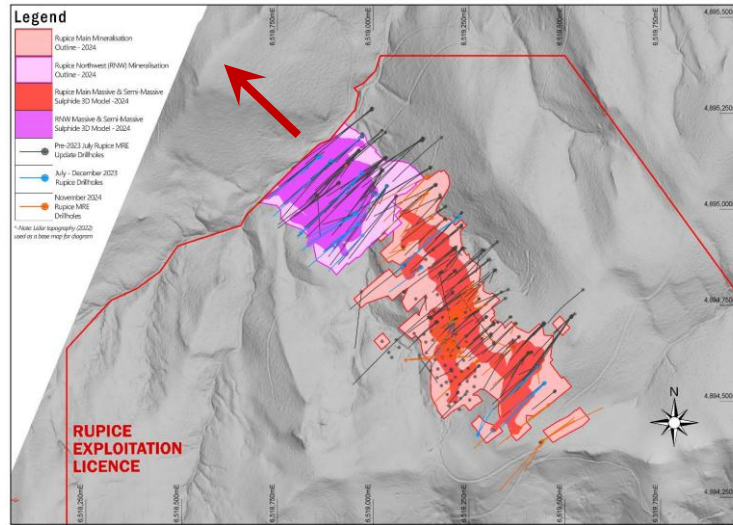
	Unit	Life of Mine
Initial operating life	Years	15
Mill throughput capacity	ktpa	850
Avg. grade processed ¹	g/t AuEq.	9.2
Gold equivalent recovery	%	85.8
Gold equivalent payability	%	76.2
Total payable production ¹	Moz. AuEq.	1.8
Average annual payable production ¹	Koz. AuEq.	168
All-in sustaining cost ²	\$/oz. AuEq.	\$893
Initial capital (H2 2025-2026)	US\$M	\$76
Sustaining capital	US\$M	\$143
Post-tax cash flow	US\$M	\$2,107
Post-tax NPV _{5%}	US\$M	\$1,608

Identified Near-Term Optimization Opportunities



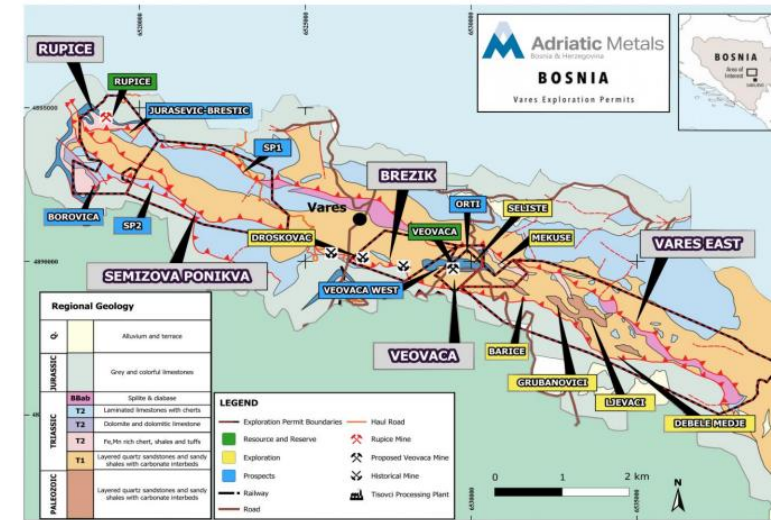
Ore Sorting

- Increases ore grades to the mill



Extending Mineralization to the North-West

- Wider, higher-grade zones
- Priority for stakeholder engagement and exploration plans



Prospective Land Package

- Prospective Dinarides mineral belt
- 22-km corridor in proximity to Vareš infrastructure and mill
- Hosts several barite and massive sulphide occurrences

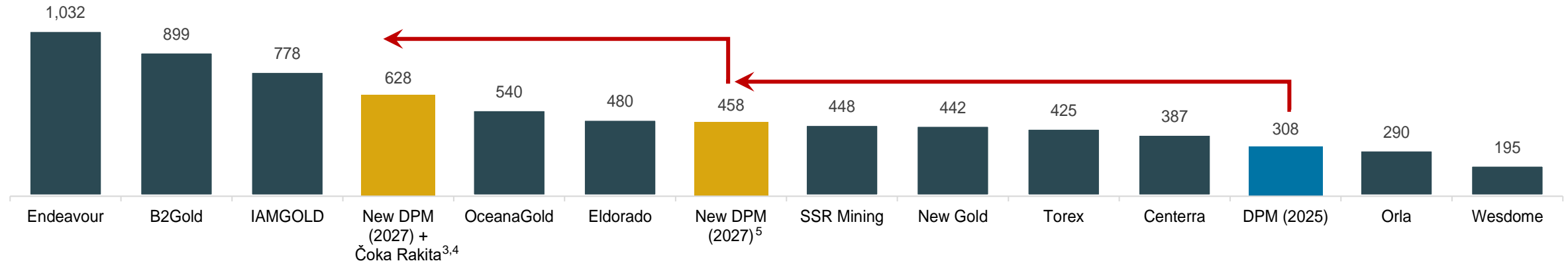
Benefits to Adriatic Shareholders

- Greater scale and diversification
- Continued exposure to Adriatic's Vareš operation and future exploration upside, with a lower risk profile
- Strong financial positioning with attractive margins and balance sheet for greater operating flexibility
- Exposure to DPM's attractive organic growth projects and exploration prospects
- Enhanced growth and re-rate potential
- Shared commitment to responsible mining practices
- Enhanced trading liquidity, enhanced institutional investor following and capital markets profile
- Value realization through partial upfront cash proceeds

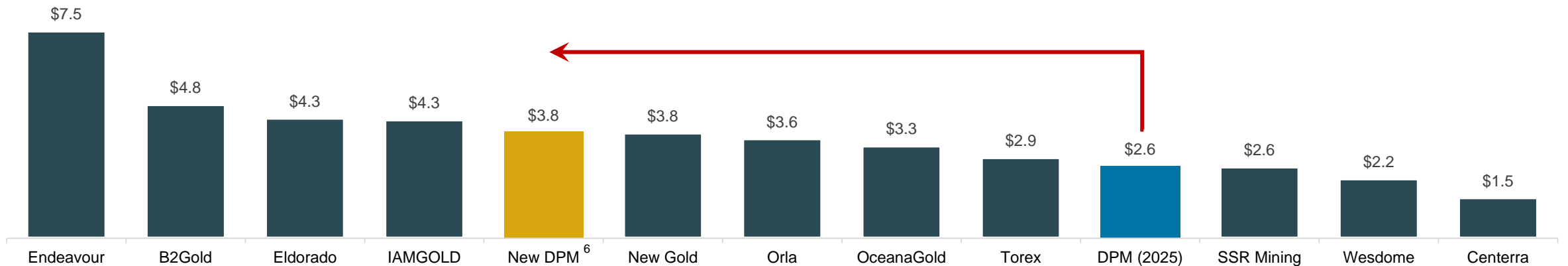
Creating a high-growth, high-margin precious metal producer

Near-Term Production Growth, Increased Scale & Liquidity...

2025E Production Guidance (koz AuEq.)



Market Capitalization (US\$ Bn)



.... potential for a valuation re-rate

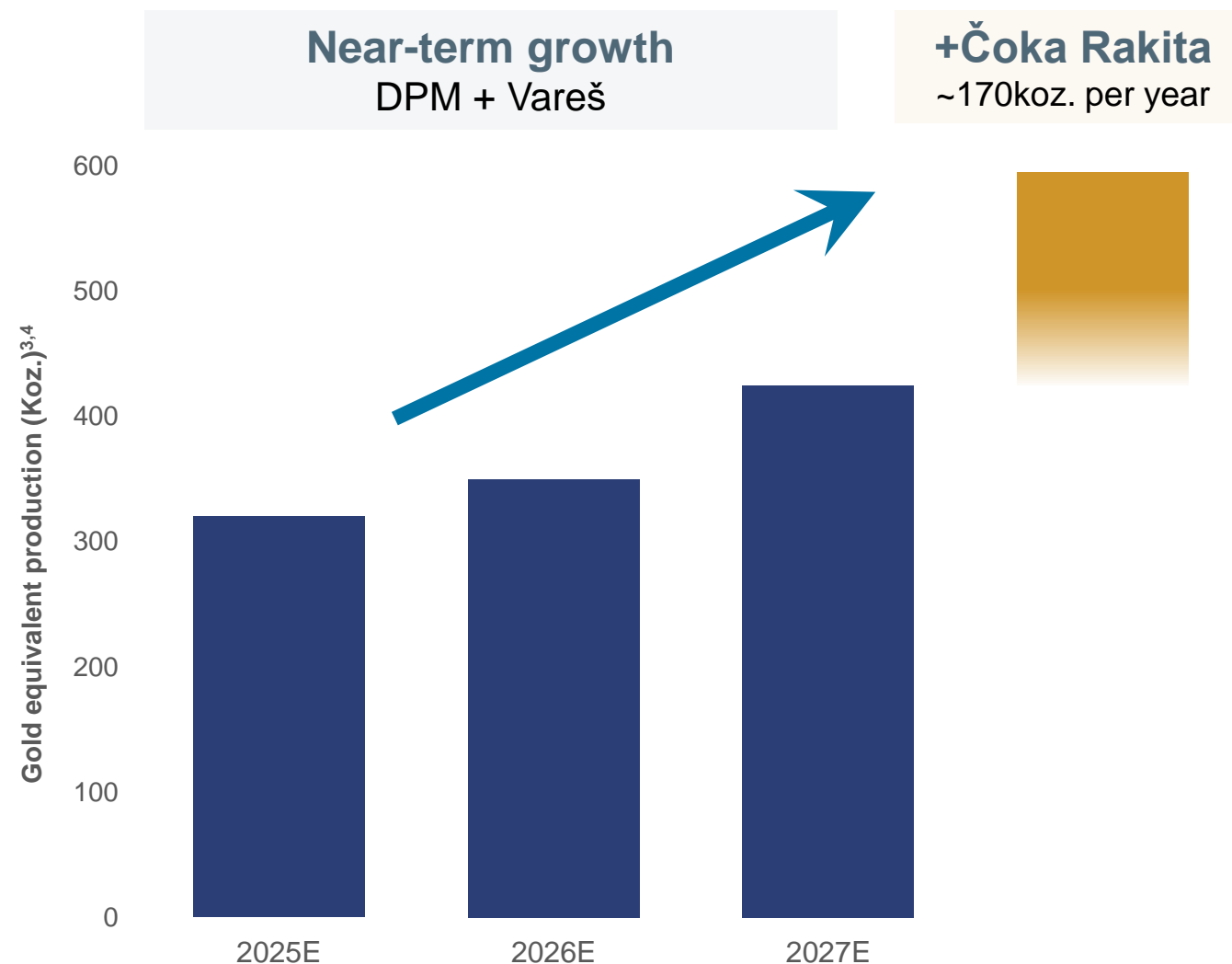
Growing Precious Metals Producer

Peer-leading growth profile

- Growth from Vareš complements organic initiatives at Čoka Rakita and Loma Larga
- Growth funded from a strong balance sheet

Primary precious metals producer

- 70% of revenue from precious metals
- Increases to ~80% once Čoka Rakita is in full production



Creating a Premier Mining Business

Near-term growth with long-life deposits

Regional presence and expertise to deliver value

Strong balance sheet and sustainable financial returns

Prospective land positions explored by proven team

High-margin asset portfolio with peer-leading production growth

Recognized team for building strong community relationships



Responsible & Efficient Production from our Portfolio



Chelopech

High-quality cornerstone asset

- Strong, reliable low-cost gold and copper underground mine
- **2025E⁶**
160-185koz Au; 28-33Mlbs. Cu
\$550-\$650/oz. all-in sustaining cost⁷



Ada Tepe

High-grade, open pit

- First new mine permitted & built in the Balkans in over 40 years
- **2025E⁶**
765-80koz Au
\$840-\$960/oz. all-in sustaining cost⁷

Three-Year Outlook⁶ (2025E to 2027E)

~200koz. per year
average annual gold production

30Mlbs.
average annual copper production

\$865/oz. Au sold
average all-in sustaining cost

10-year track record of delivery underpins growth strategy

Advancing the Čoka Rakita Project

- Feasibility study expected to be completed **by year-end 2025**
- High-grade Mineral Reserve estimate: **1.36 Moz. Au (6.63 Mt at 6.38 g/t)⁸**
- Strong fit with underground **mining and processing expertise**
- Regional proximity to existing operations in Bulgaria
- DPM presence in **region since 2004**

PFS Highlights⁸

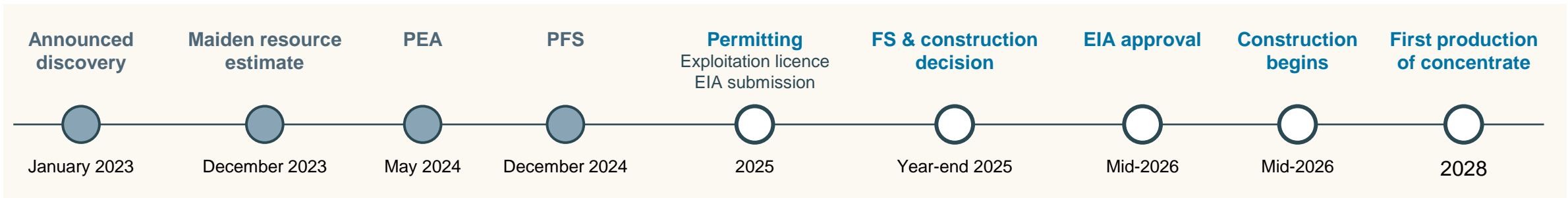
170koz. annual gold production
(first 5 full years)

\$644/oz. Au sold
all-in sustaining cost

\$379M
initial capital expenditures

\$765M NPV_{5%} | 41% IRR
robust economics at \$1,900/oz. Au

Project milestones



High-margin growth project with first gold production targeted for 2028

Vareš Mine Production Schedule

Year	Unit	Total	H2 2025	2026	2027	2028	2029	2030	2031	2032	2033	2034	2035	2036	2037	2038	2039
Ore Tonnage	(kt)	9,459	77	405	850	850	851	850	851	850	851	851	851	602	462	185	74
Ore Grade																	
Zn	(%)	6.89	7.34	7.15	6.83	6.81	6.28	7.35	8.07	7.73	6.61	6.04	6.57	6.41	7.05	6.34	6.66
Pb	(%)	4.41	4.39	4.08	4.05	4.36	3.83	4.66	5.29	5.19	4.72	3.86	4.26	4.08	4.31	4.07	4.22
Cu	(%)	0.58	0.64	0.58	0.54	0.60	0.53	0.64	0.84	0.74	0.67	0.39	0.46	0.45	0.44	0.45	0.43
Au	(g/t)	1.73	3.16	2.19	2.04	2.03	2.06	1.91	2.11	1.93	1.50	1.13	1.33	1.21	1.12	1.29	1.22
Ag	(g/t)	230	271	230	238	247	255	265	282	246	236	179	187	191	177	208	214
Sb	(%)	0.19	0.15	0.21	0.28	0.22	0.27	0.19	0.22	0.19	0.15	0.12	0.13	0.14	0.11	0.10	0.09
Metal Recoveries																	
Zn	(%)	90.8	91.1	90.9	90.8	90.8	90.7	90.9	91.0	91.0	90.8	90.7	90.8	90.8	90.9	90.7	90.8
Pb	(%)	92.6	93.2	92.5	92.4	92.6	92.2	92.7	93.1	93.1	92.8	92.3	92.5	92.4	92.6	92.4	92.5
Cu	(%)	94.8	94.2	94.7	95.1	94.7	95.1	94.6	93.9	94.3	94.5	95.7	95.4	95.4	95.4	95.5	95.6
Au	(%)	62.8	70.6	65.6	64.3	63.9	64.1	63.4	64.4	63.4	61.1	58.2	59.7	58.9	58.2	59.4	58.8
Ag	(%)	89.6	90.5	89.7	89.6	89.7	89.9	89.9	90.2	89.8	89.7	88.7	88.8	88.9	88.7	89.1	89.2
Sb	(%)	93.9	93.0	94.3	95.2	94.4	94.9	93.8	94.3	93.8	93.2	92.3	92.5	92.9	92.0	91.7	91.4
Product																	
Zn Con	(kt)	907	7.8	40.2	80.8	80.4	74.2	86.8	94.5	91.2	78.3	71.7	77.8	55.2	45.3	16.4	6.9
Pb Con	(kt)	791	6.3	31.6	66.3	70.3	63.2	74.4	82.1	81.3	75.2	63.9	69.2	48.5	37.9	14.5	6.0
Recovered metal																	
Zn	(kt)	592	5.1	26.3	52.7	52.5	48.2	56.8	62.1	59.8	51.0	46.6	50.7	35.9	29.6	10.7	4.5
Pb	(kt)	386	3.1	15.3	31.8	34.2	29.9	36.7	41.6	41.0	37.2	30.3	33.5	23.3	18.4	7.0	2.9
Cu	(kt)	52	0.5	2.2	4.4	4.8	4.3	5.2	6.7	6.0	5.4	3.2	3.8	2.6	1.9	0.8	0.3
Au	(koz)	330	5.5	18.7	35.8	35.4	36.0	33.1	37.0	33.4	25.1	17.9	21.7	14.1	9.7	4.6	1.7
Ag	(Moz)	63	0.60	2.68	5.83	6.05	6.24	6.50	6.90	6.03	5.77	4.35	4.53	3.37	2.33	1.10	0.46
Sb	(t)	16,515	106	788	2,238	1,794	2,153	1,512	1,747	1,509	1,220	938	1,012	811	456	170	63
Au Eq	(koz)	2,402	24	100	213	224	220	240	267	246	218	171	188	133	100	41	17
Payable Metal																	
Zn	(kt)	446	3.9	20.1	39.9	39.5	36.6	42.7	46.5	45.2	38.2	35.0	38.0	26.9	22.3	8.0	3.4
Pb	(kt)	337	2.8	13.2	27.6	29.8	25.8	32.1	36.7	36.1	32.5	26.2	29.1	20.2	16.1	6.0	2.5
Cu	(kt)	11	0.1	0.5	0.9	1.0	0.9	1.1	1.4	1.2	1.1	0.6	0.8	0.5	0.4	0.2	0.1
Au	(koz)	245	4.6	14.8	27.8	27.2	28.2	24.8	28.0	24.8	17.8	11.8	14.9	9.4	6.1	3.1	1.1
Ag	(Moz)	56	0.5	2.4	5.2	5.5	5.6	5.9	6.2	5.4	5.2	3.9	4.1	3.0	2.1	1.0	0.4
Sb	(t)	1,914	6	133	458	325	498	169	191	100	-	-	-	29	3	-	-
Au Eq	(koz)	1,831	19	78	164	171	171	184	202	186	164	130	142	101	76	31	13

Mineral Resources and Mineral Reserves

Mineral Resources Estimate

1 April 2025

	Tonnage	Ag	Zn	Pb	Au	Cu	Sb
	(Mt)	(g/t)	(%)	(%)	(g/t)	(%)	(%)
Indicated	10.7	264	7.4	4.8	1.9	0.65	0.22
Inferred	0.9	150	3.5	2.8	0.8	0.37	0.15

Mineral Reserve Estimate

1 April 2025

	Tonnage	Ag	Zn	Pb	Au	Cu	Sb
	(Mt)	(g/t)	(%)	(%)	(g/t)	(%)	(%)
Proved	-	-	-	-	-	-	-
Probable	9.46	230	6.9	4.4	1.7	0.58	0.19
Total	9.46	230	6.9	4.4	1.7	0.58	0.19

Endnotes

1. The gold equivalent metrics for Vareš is reported to align with DPM's standard reporting format. Gold contributes 14% to the net revenue, whereas other metals contribute in the amounts of: silver – 39%; zinc – 28%; lead – 17%; and copper – 2%. The reported grade was calculated from the Mineral Reserve metal grades are detailed in the Rupice Mineral Reserve statement (see “Mineral Resources and Mineral Reserves Estimate” section on slide 18 of this presentation).

Commodity price assumptions are detailed below:

- Zinc: 2025 - \$2,806/t; 2026 - \$2,711/t; 2027 - \$2,766/t; 2028 - \$2,780/t; 2029 onwards - \$2,661/t.
- Lead: 2025 - \$2,07/t; 2026 - \$2,059/t; 2027 - \$2,082/t; 2028 - \$2,050/t; 2029 onwards - \$2,604/t.
- Copper: 2025 - \$8,818/t; 2026 - \$9,811/t; 2027 - \$10,119/t; 2028 - \$10,362/t; 2029 onwards - \$9,348/t.
- Gold: 2025 - \$2,300/oz.; 2026 - \$2,621/oz.; 2027 - \$2,490/oz.; 2028 - \$2,363/oz.; 2029 onwards - \$2,212/oz.
- Silver: 2025 - \$27.00/oz.; 2026 - \$31.87/oz.; 2027 - \$30.76/oz.; 2028 - \$29.08/oz.; 2029 onwards - \$27.69/oz.
- Antimony: 2025 onwards - \$2,300/t.

Life of mine average metal recoveries are as follows: zinc – 90.8%; lead – 92.6%; copper – 94.8%, gold - 62.8%; silver - 89.6%. antimony – 93.9%.

Life of mine total metal payabilities are as follows: zinc – 75.3%; lead – 87.1%; copper – 20.4%, gold – 74.2%; silver – 90.0%. antimony – 11.6%.

2. All-sustaining cost and all-in sustaining cost per gold equivalent ounce on a co-product basis are non-GAAP measures. All-in sustaining cost consists of all cash costs, plus treatment charges, penalties, transportation and other selling costs, cash outlays for sustaining capital expenditures and leases, and rehabilitation-related accretion and amortization expenses. All-in sustaining cost per gold equivalent ounce is calculated as all-in sustaining cost divided by payable gold equivalent ounces. The Company uses conversion ratios for calculating gold equivalent ounces for its silver, zinc, lead and copper sales, which are calculated by multiplying the volumes of metal sold by the respective assumed metal prices and dividing the resulting figure by assumed gold price.

These non-GAAP cost metrics capture the important components of the Company's production and related costs and are used by DPM and investors to monitor cost performance at the DPM operations. As Vareš is not in commercial production, DPM does not have historical non-GAAP financial measures nor historical comparable measures under IFRS, and therefore the foregoing prospective non-GAAP financial measures or ratios presented may not be reconciled to the nearest comparable measure under IFRS.

3. Gold equivalent ounces are calculated based on average conversion ratios as follows: silver to gold of 82:1, copper pounds to gold of 582:1, zinc pounds to gold of 1,854:1 and lead pounds to gold of 2,436:1.
4. Based on the Company's three-year outlook, the Vareš NI 43-101 Technical Report and the Čoka Rakita pre-feasibility study. Refer to i) the Company's 2025 guidance and three-year outlook, which can be found in the MD&A for the period ended March 31, 2025; ii) the technical report “NI 43-101 Technical Report on the Vareš Mine, Bosnia and Herzegovina” with an effective date of April 1, 2025; iii) the technical report “NI 43-101 Technical Report Čoka Rakita Project Pre-Feasibility Study, Eastern Serbia” dated January 31, all of which are available on the Company's website at www.dundeeprecious.com and on SEDAR+ at www.sedarplus.ca.
5. Based on pro-forma shares outstanding multiplied by DPM's closing price as of June 6, 2025.
6. Forecast/guidance information is subject to a number of key assumptions, risks and uncertainties. Details of the Company's 2025 guidance and three-year outlook can be found in the MD&A for the period ended March 31, 2025, available on the Company's website at www.dundeeprecious.com and on SEDAR+ at www.sedarplus.ca. See “Forward Looking Statements” on slide 2.
7. All-in sustaining cost per ounce of gold is a non-GAAP ratio which represents cost of sales less depreciation, amortization and other non-cash items plus treatment charges, penalties, transportation and other selling costs, cash outlays for sustaining capital expenditures and leases, rehabilitation-related accretion and amortization expenses and an allocated portion of the Company's general and administrative expenses less by-product revenues in respect of copper and silver including realized gains on copper derivative contracts divided by the payable gold in concentrates sold. Non-GAAP measures have no standardized meaning under IFRS. Refer to the “Non-GAAP Financial Measures” section of the Company's MD&A for the period ended March 31, 2025.
8. Refer to the technical report “NI 43-101 Technical Report Čoka Rakita Project Pre-Feasibility Study, Eastern Serbia” dated January 31, 2025, available at www.dundeeprecious.com and SEDAR+ at www.sedarplus.ca.

Technical and Regulatory Information

The scientific and technical information contained in this presentation were prepared in accordance with the Canadian regulatory requirements set out in NI 43-101, and have been reviewed and approved by: Sabine Anderson, MIMMM, Principal Consultant (Mining Due Diligence); Martin Pittuck, MIMMM, Corporate Consultant (Resource Geology); Michael Di Giovinazzo, AusIMM, Principal Consultant (Rock Mechanics Engineering); Peter Myers, FAusIMM, Principal Consultant (Mining Engineering); John Willis, MAusIMM, Principal Consultant (Mineral Processing); Richard Martindale, MIMMM, Principal Consultant (Geotechnical/ Tailings Engineering); James Bellin, MIMMM, Principal Consultant (Hydrogeology); and Colin Chapman, MIMMM, Principal Consultant (Infrastructure). All are independent Qualified Persons, as defined under NI 43-101.

The Vareš Technical Report was filed on SEDAR+ at www.sedarplus.ca and on DPM's website at www.dundeeprecious.com. Investors should read the Technical Report in its entirety, including all qualifications, assumptions and exclusions that relate to the technical and scientific information presented in this presentation.



Corporate Head Office

150 King Street West, Suite 902
Toronto, Ontario M5H 1J9
T: 416 365-5191

Investor Relations

jcameron@dundeeprecious.com
T: 416 219-6177
www.dundeeprecious.com